



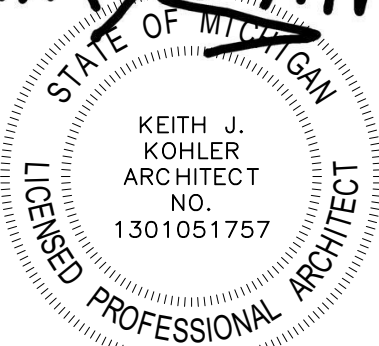
# FIRE ALARM REPLACEMENT & RELATED WORK AT RAISINVILLE ELEMENTARY SCHOOL

2300 NORTH RAISINVILLE ROAD, MONROE MI 48162



**KOHLER**  
ARCHITECTURE  
1110 WEST FRONT STREET  
MONROE, MICHIGAN 48161  
WWW.KOHLERARCHITECT.NET

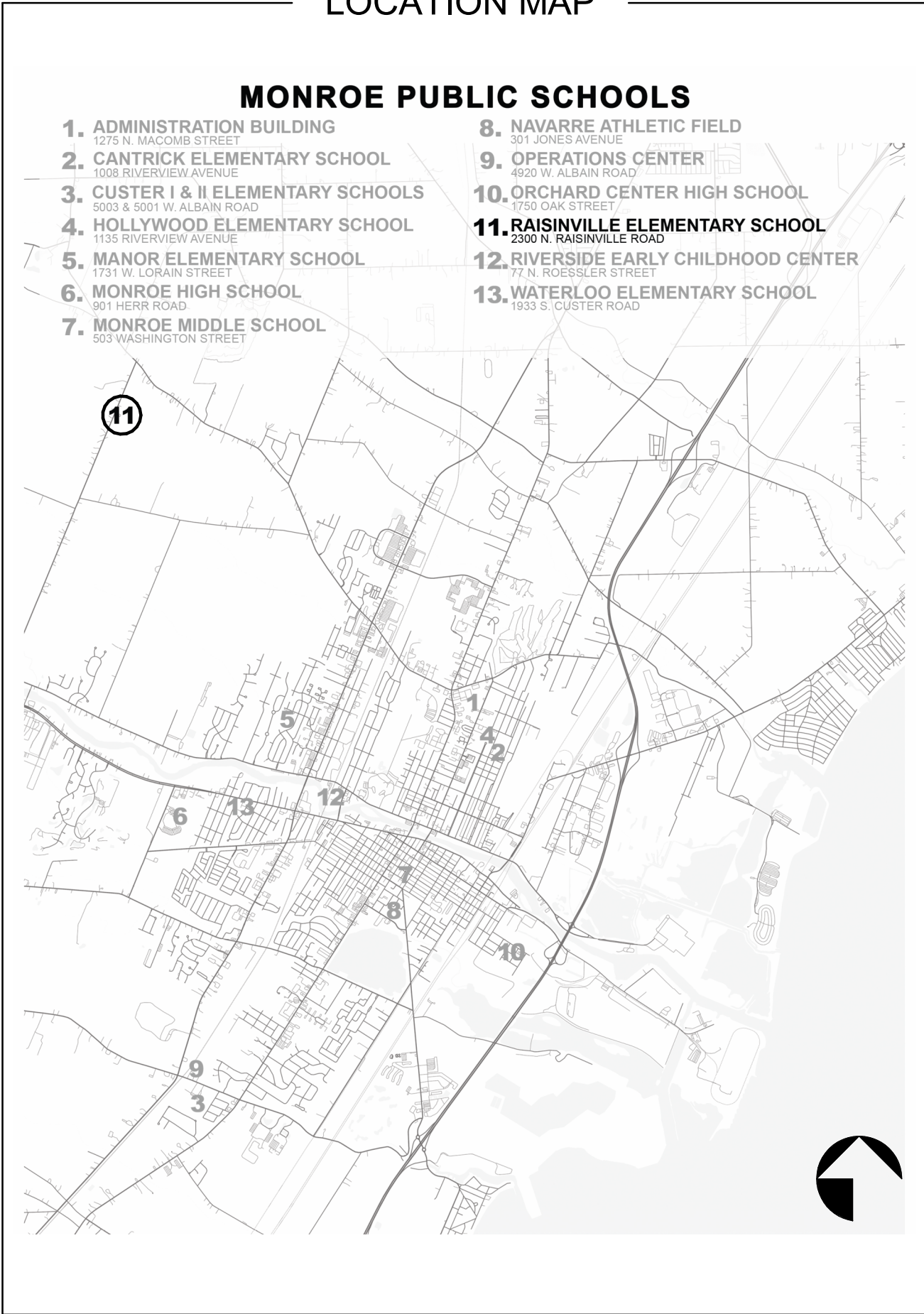
**MAKE**  
Things Better+



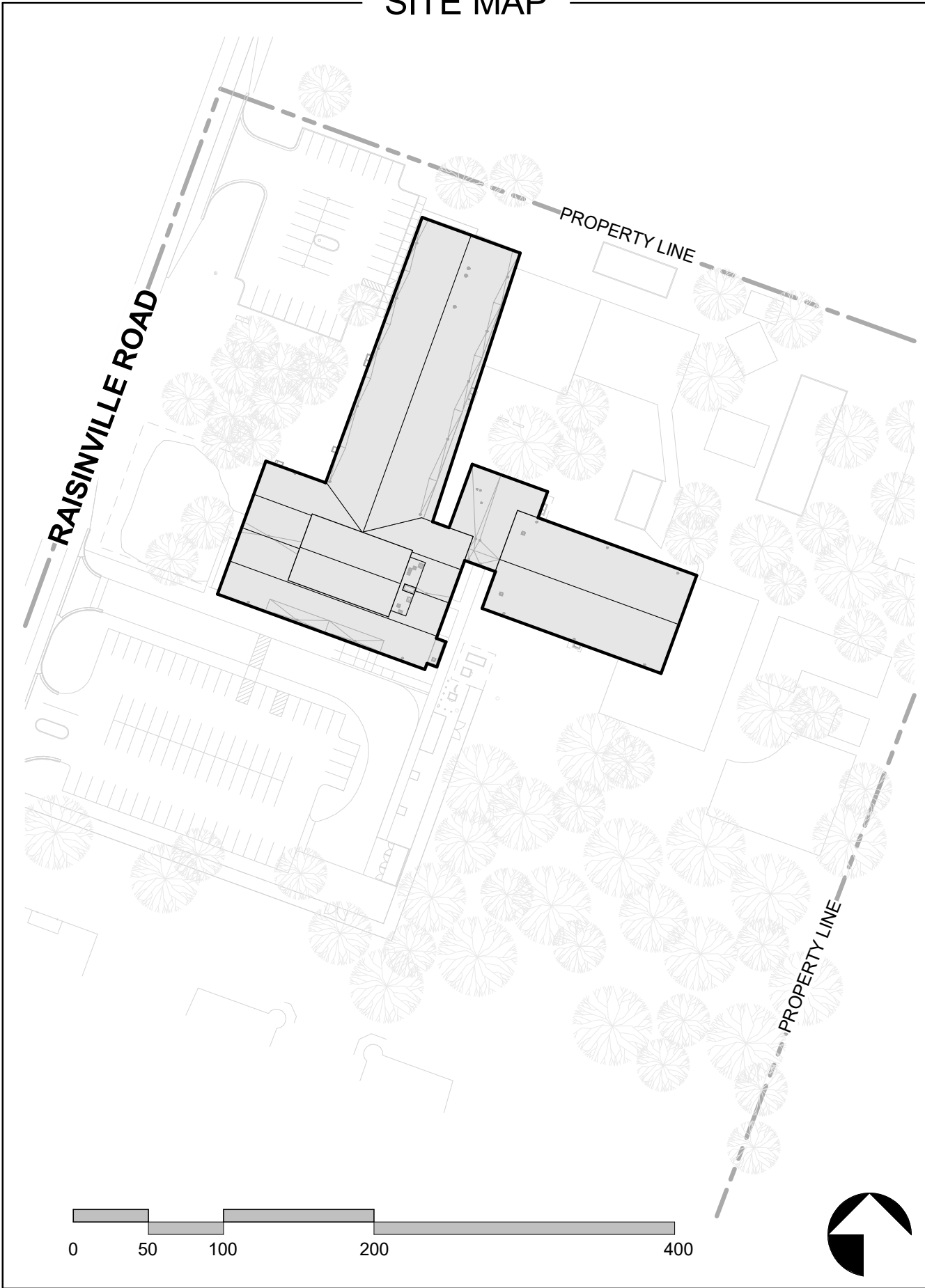
2/9/2026

DATE	DESCRIPTION
02.09.2026	BIDDING & STATE REVIEW

## LOCATION MAP



## SITE MAP



## PROJECT DIRECTORY

**OWNER:**  
MONROE PUBLIC SCHOOLS  
1275 NORTH MACOMB STREET  
MONROE, MICHIGAN 48162

**CONTACT:**  
DAVID PAYNE  
E: PAYNE@MONROE.K12.MI.US  
T: 734.265.3150

**ARCHITECT OF RECORD:**  
KOHLER ARCHITECT, INC.  
1110 WEST FRONT STREET  
MONROE, MICHIGAN 48161

**CONTACT:**  
VICTORIA CAPRANICA, NCARB  
E: VCAPRANICA@KOHLERARCHITECT.NET  
T: 734.242.6880

**MECHANICAL ENGINEER OF RECORD:**  
KLEINFELDER  
415 CONANT STREET  
MAUMEE, OHIO 43537

**CONTACT:**  
RYAN D. GRAMLING  
E: RGRAMLING@KLEINFELDER.COM  
T: 419.891.0022

## PROJECT DESCRIPTION

### PROJECT NARRATIVE:

REMOVE EXIST. FIRE ALARMS AND RELATED HARDWARE, INSTALL NEW UP TO DATE FIRE ALARMS AND RELATED HARDWARE. PATCH FINISHES IN AREA OF WORK.

## DRAWING INDEX

T0.00	TITLE SHEET
T1.00	ABBREVIATIONS, LEGENDS, SYMBOLS
LS1.00	CODE COMPLIANCE PLAN
A1.00	OVERALL REFLECTED CEILING PLAN W / FIRE ALARM COORDINATION
E1.01	ELECTRICAL LEGEND AND DETAILS
E2.01	FIRE ALARM SYSTEM DEMOLITION PLAN
E4.01	FIRE ALARM SYSTEM PLAN

## FIRE ALARM REPLACEMENT & RELATED WORK

### RAISINVILLE ELEMENTARY SCHOOL

2300 NORTH RAISINVILLE ROAD, MONROE MI 48162

### MONROE PUBLIC SCHOOLS

AT

FOR

JOB # 26103

TITLE SHEET

T0.00



ABBREVIATIONS

"	INCHES	GFI	GROUND FAULT INTERRUPTED	RTU	ROOF TOP UNIT
#	POUND/NUMBER	GL	GLASS	S	SOUTH
%	PERCENT	GYP.	GYPSUM BOARD	S.F.	STOREFRONT
&	AND	BD.		SAN.	SANITARY
'	FEET			SCHED	SCHEDULED
/	PER	HB	HOSE BIBB	SD	STORM DRAIN / SMOKE DETECTOR
<	ANGLE	HC	HANDICAP ACCESSIBLE	SECT.	SECTION
@	AT	HDW	HARDWARE	SGT	STRUCTURAL GLAZED TILE
©	COPYRIGHT	HDWD	HARDWOOD	SHT	SHEET
°	DEGREE	HM	HOLLOW METAL	SHWR	SHOWER
±	PLUS/MINUS	HORIZ	HORIZONTAL	SIM.	SIMILAR
Ø	DIAMETER	HR	HOUR	SP.	SPACES
		HSS	HOLLOW STEEL SECTION	SPEC	SPECIFICATION
A.C.	AIR CONDITIONING	HT	HEIGHT	SQ.	SQUARE
ACT	ACOUSTICAL CEILING TILE	HVAC	HEATING / VENTILATING / AIR CONDITIONING	SS	STAINLESS STEEL
ADD	ADDITIONAL / ADDENDUM			STD	STANDARD
ADJ	ADJACENT			STL	STEEL
AFF	ABOVE FINISHED FLOOR	IN	INCH(ES)	STO.	STORAGE
AHU	AIR HANDLING UNIT	INFO	INFORMATION	STRUC	STRUCTURAL
ALT	ALTERNATE	INSUL	INSULATION	SUSP.	SUSPENDED
ALUM	ALUMINUM	INT	INTERIOR	SYM.	SYMMETRICAL
ANOD	ANODIZED				
APPRO	APPROXIMATE	JAN	JANITOR	T.	TOILET
X		JST.	JOIST	T.G	TEMPERED GLASS
ARCH	ARCHITECTURAL	JT	JOINT	T.O.	TOP OF
AUTO	AUTOMATIC			T.O.C	TOP OF CONCRETE
		k	KIP (1000 lbs)	T.S.	TUBE STEEL
B.O.	BOTTOM OF	K.D	KNOCK DOWN	T.V.	TELEVISION
B.P.L	BASE PLATE	KIT	KITCHEN	TECH	TECHNICAL
BD	BOARD	KW	KILOWATT	TELE	TELEPHONE
BLDG	BUILDING			TEMP	TEMPERATURE
BLK	BLOCK	L	LEGNTH	THRU	THROUGH
BLKG	BLOCKING	L.G.	LONG	TRANS	TRANSITION
BOT	BOTTOM	L.H.	LEFT HAND	TYP.	TYPICAL
BTW	BETWEEN	L.L.	LIVE LOAD		
		L.W.C	LIGHT WEIGHT CONCRETE	U.N.O.	UNLESS NOTED OTHERWISE
C.G	CORNER GUARD	LAB	LABORATORY	UL	UNDERWRITERS LABORATORIES, INC.
C.I.	CAST IRON	LAM	LAMINATE	UNF	UNFINISHED
C.I.P.	CAST-IN-PLACE	LAV	LAVATORY	UR	URINAL
C.J.	CONTROL JOINT	LB	POUND		
C.L	CENTERLINE	LT	LIGHT	VB	VAPOR BARRIER
C.O.	CLEAN OUT	LTL	LINTEL	VCT	VINYL COMPOSITION TILE
CL	CLOSET	LVR	LOUVER	VERT	VERTICAL
CLG	CEILING			VEST.	VESTIBULE
CLKG	CAULKING	M.O.	MASONRY OPENING	VIF	VERIFY IN FIELD
CLR	CLEAR	MAS	MASONRY	VWC	VINYL WALL COVERING
CLRM	CLASSROOM	MATL	MATERIAL		
CMU	CONCRETE MASONRY UNIT	MAX.	MAXIMUM	W	WEST
COL	COLUMN	MBR	MEMBER	W.C.	WATER CLOSET
CONC	CONCRETE	MDF	MEDIUM DENSITY FIBREBOARD	W/	WITH
COORD	COORDINATE	MECH	MECHANICAL	W/O	WITHOUT
CORR	CORRIDOR	MED	MEDIUM	WD	WOOD
CPT	CARPET	MEMB	MEMBRANE	WF	WIDE FLANGE
CT	CERAMIC TILE	MFR	MANUFACTURER	WH	WATER HEATER
		MH	MANHOLE	WT.	WEIGHT
D.F.	DRINKING FOUNTAIN	MIN.	MINIMUM	WTR	WATER
D.L.	DEAD LOAD	MIRR	MIRROR	WWF	WELDED WIRE FIREBRIC
D.O.	DOOR OPENING	MISC.	MISCELLANEOUS		
DEG	DEGREE	MTD	MOUNTED		
DEPT	DEPARTMENT	MTL	METAL		
DIA	DIAMETER	MULL	MULLION		
DIM	DIMENSION	MULT	MULTIPLE		
DIV	DIVISION				
DN	DOWN	N	NORTH		
DR	DOOR	N.I.C	NOT IN CONTRACT		
DS	DOWNSPOUT	N.O.	NUMBER		
DTL	DETAIL	N.R.	NOT RATED		
DWG	DRAWING	N.T.S.	NOT TO SCALE		
		NFPA	NATIONAL FIRE PROTECTION ASSN		
E	EAST	NOM	NOMINAL		
E.J.	EXPANSION JOINT	NORM	NORMAL		
E.S.	EACH SIDE				
EA.	EACH	O.C.	ON CENTER		
EIFS	EXTERIOR INSULATION AND FINISH SYSTEM	O.D.	OVERFLOW DRAIN		
EL.	ELEVATION	O.H.	OVERHEAD		
ELEC	ELECTRICAL	OFF.	OFFICE		
ELEV.	ELEVATOR	OPNG	OPENING		
EPDM	ETHYLENE PROPYLENE DIENE MONOMER	OPP	OPPOSITE		
EQ	EQUAL	ORIG	ORIGINAL		
EQUIP	EQUIPMENT	OVHG	OVERHANG		
EXIST	EXISTING	OZ	OUNCE		
EXP	EXPANSION				
EXT	EXTERIOR				
		P.C.	PRECAST CONCRETE		
F.A.	FIRE ALARM	P.T.	PRESSURE TREATED		
F.D.	FLOOR DRIAN	PAR	PARALLEL		
F.E.	FIRE EXTINGUISHER	PARA	PARAPET		
F.E.C	FIRE EXTINGUISHER CABINET	PERF.	PERFORATED		
F.HYD.	FIRE HYDRANT	PL	PLATE		
F.O.	FACE OF	PLAM	PLASTIC LAMINSTE		
F.R	FIRE RATED	PLUM	PLUMBING		
F.R.P.	FIBER-REINFORCED PLASTIC	PLYWD	PLYWOOD		
F.R.P.	FIBER-REINFORCED PLASTIC	PSF	POUNDS / SQUARE FOOT		
F.R.T.	FIRE RETARDANT TREATED	PT	PAINT		
FDC	FIRE DEPARMENT CONNECTION	PVC	POLYVINYL CHLORIDE		
FF	FINISH FLOOR	PVMT	PAVEMENT		
FIN.	FINISH	PWR	POWER		
FIXT	FIXTURE	QT	QUARRY TILE		
FLASH	FLASHING	QTY	QUANTITY		
FLR	FLOORING				
FRMG	FRAMING	R.A.	RETURN AIR		
FT	FOOT / FEET	R.B.	RUBBER OR RESILIENT BASE		
FTG	FOOTING	R.D.	ROOF DRAIN		
FURR	FURRING	R.O.	ROUGH OPENING		
		RAD	RADIUS		
G	GAS	REF	REFERENCE		
G.B.	GRADE BEAM	REFG	REFRIGERATOR		
G.C.	GENERAL CONTRACTOR	REINF	REINFORCED		
G.R.	GUARDRAIL	REQD	REQUIRED		
GA	GAUGE	REV	REVISED / REVISION		
GALV	GALVENIZED	RH	ROOF HATCH		
GB	GRAB BAR	RM	ROOM		
GEN	GENERATOR				

SYMBOLS LEGEND

**BUILDING SECTION CUT**

**WALL SECTION CUT**

**DETAIL SECTION CUT**

**EXTERIOR ELEVATIONS**

**INTERIOR ELEVATIONS**

**REVISIONS**

△ 1 REVISION TAG & BUBBLE

**ENLARGED PLAN/DETAIL**

**DRAWING TAGS**

101	DOOR TAG
11	WINDOW TAG
11	WALL TAG
X	SITE KEYNOTE
X	CONSTRUCTION KEYNOTE
X	DEMOLITION KEYNOTE
X	CEILING KEYNOTE
X	ROOF KEYNOTE
SLOPE RATIO	SLOPE TAG
TRUE NORTH ARROW	TRUE NORTH ARROW
ROOM NAME 101	TYP. ROOM TAG W/ NUMBER

GENERAL NOTES

1. ALL WORK SHALL BE DONE IN STRICT ACCORDANCE WITH APPLICABLE SECTIONS OF THE FEDERAL, STATE AND LOCAL BUILDING CODES, ZONING ORDINANCE, HEALTH AND FIRE REGULATIONS AS ADOPTED BY THE LOCAL GOVERNING BUILDING AUTHORITY.
2. CONTRACTOR SHALL OBTAIN AND PAY FOR ALL NECESSARY BUILDING PERMITS FROM ALL GOVERNING AGENCIES INCLUDING THE CITY / TOWNSHIP AND SUBMIT FOR THEIR USE ANY CERTIFICATES OF INSURANCE, BONDS, ESCROW ACCOUNTS, LICENSES, PAY ALL FEES, OBTAIN ALL APPROVALS, ETC. ALL AS MAY BE REQUIRED TO COMPLETE THIS PROJECT
3. CONTRACTOR SHALL RETAIN THE SERVICES OF AN APPROVED THIRD PARTY AGENCY TO PERFORM ALL SPECIAL INSPECTIONS AND TESTING AS REQUIRED BY THE LOCAL GOVERNING BUILDING CODE, GOVERNING BUILDING AUTHORITY, OR AS CALLED OUT IN THESE CONSTRUCTION DOCUMENTS. NOTIFY OWNER / ARCHITECT, IMMEDIATELY, OF ANY FAILED TESTS OR INSPECTIONS AND PROVIDE OWNER WITH ALL WRITTEN REPORTS AND TEST RESULTS AT PROJECT COMPLETION.
4. CONTRACTOR SHALL VERIFY ALL EXISTING DIMENSIONS AND CONDITIONS BEFORE PROCEEDING WITH THE WORK. IF ANY DIFFERENCES ARE FOUND, THE ARCHITECT SHALL BE NOTIFIED IMMEDIATELY, IN WRITING FOR CLARIFICATION PRIOR TO PROCESSING WITH WORK.
5. THESE DOCUMENTS ARE DEVELOPED TO PROVIDE THE CONTRACTOR WITH A WORKING KNOWLEDGE OF THE SYSTEMS AND MATERIALS TO BE INSTALLED, AND THE SCOPE OF WORK, WHERE THESE DOCUMENTS ARE IN CONFLICT WITH THE JOB CONDITIONS, OR STANDARD DETAILS OR SPECIFICATIONS OF THE MANUFACTURED COMPONENT, OR AFFECT THE GUARANTEE, THEY SHALL BE MODIFIED AS REQUIRED BY THE CONTRACTOR AND APPROVED BY THE ARCHITECT.
6. PROVIDE AND MAINTAIN SUITABLE TEMPORARY FENCES, BARRICADES, LIGHTS, WARNINGS, ETC., FOR PROTECTION OF PUBLIC AND OTHERS HAVING ACCESS TO THE SITE. CONTRACTOR SHALL KEEP CLEAN AND ADEQUATELY PROTECT ALL STREETS, DRIVES, WALKS, BLDGS, ETC., FROM DAMAGE DUE TO ANY ITEM INVOLVED WITH THIS WORK. ANY DAMAGED WORK SHALL BE REPLACED / REPAIRED AT CONTRACTORS EXPENSE.
7. CONTRACTOR SHALL RELY ON WRITTEN DIMENSIONS (DO NOT SCALE DRAWINGS), WHERE NONE ARE PRESENT OR IN CONFLICT WITH WRITTEN, FIELD MEASURE AND/OR OR NOTIFY ARCHITECT FOR CLARIFICATION.
8. SHOULD THE CONTRACT DOCUMENTS DISAGREE (DRAWINGS AND SPECIFICATIONS), THE CONTRACTOR SHALL IMMEDIATELY NOTIFY THE ARCHITECT FOR CLARIFICATION BEFORE PROCEEDING. THE BETTER QUALITY OR LARGER QUANTITY OF MATERIALS OR WORK SHALL BE INCLUDED IN THE BID AND UNLESS OTHERWISE ORDERED IN WRITING, SHALL BE FURNISHED BY THE CONTRACTOR.
9. THE CONTRACTOR SHALL EXAMINE ALL DRAWINGS, SPECIFICATIONS AND ALL OTHER DATA OR INSTRUCTIONS PERTAINING TO THE WORK. BEFORE COMMENCING PHYSICAL WORK, THE CONTRACTOR SHALL LOCATE ALL GENERAL REFERENCE POINTS AND TAKE SUCH ACTION AS IS NECESSARY TO PREVENT THEIR DESTRUCTION; LAY OUT HIS WORK AND BE RESPONSIBLE FOR ALL LINES, ELEVATIONS AND MEASUREMENTS OF BUILDINGS, GRADING, PAVING, UTILITIES AND OTHER WORK EXECUTED BY HIM UNDER THE CONTRACT. HE MUST EXERCISE PROPER PRECAUTIONS TO VERIFY FIGURES SHOWN ON DRAWINGS BEFORE LAYING OUT WORK.
10. IT SHALL BE THE RESPONSIBILITY OF THE CONTRACTOR, HIS SUB-CONTRACTOR AND/OR SUPPLIER TO WORK FROM A FULL SET OF CONTRACT DOCUMENTS FOR BOTH THE WORK TO BE COMPLETED AND IN PREPARATION OF THE SHOP DRAWINGS, SO THAT EACH PART OR COMPONENT WILL WORK WITH THOSE PARTS AS FURNISHED OR FABRICATED BY OTHERS, AND THE ASSEMBLED WHOLE WORKS TOGETHER AS INTENDED.
11. MATERIALS - SHALL BE NEW. SECONDS OR DAMAGED MATERIALS WILL BE REJECTED BY THE ARCHITECT. WHO RESERVES THE RIGHT TO DISAPPROVE AND REJECT ANY MATERIALS PROPOSED OR INSTALLED, WHICH IN HIS OPINION FAIL TO MEET QUALITY STANDARDS SPECIFIED.
12. THE ARCHITECT SHALL HAVE NO RESPONSIBILITY FOR THE DISCOVERY, PRESENCE, HANDLING, REMOVAL, OR DISPOSAL OF, OR EXPOSURE OF PERSONS TO ASBESTOS AND HAZARDOUS MATERIALS IN ANY FORM FOR THE PROJECT.
13. AS-BUILTS - THE CONTRACTOR SHALL KEEP AN ACCURATE RECORD OF ALL DEVIATIONS FROM THE CONTRACT DRAWINGS AND SPECIFICATIONS. HE SHALL NEATLY AND CORRECTLY DRAFT (NO FREEHAND) ANY DEVIATIONS ON THE DRAWINGS AFFECTED AND SHALL KEEP DRAWINGS AVAILABLE FOR INSPECTION. GIVE TO THE ARCHITECT AT COMPLETION.
14. CONTRACTOR SHALL COORDINATE THE INSTALLATION OF THE VARIOUS TRADE ITEMS WITHIN THE SPACE ABOVE ALL CEILINGS (INCLUDING, BUT NOT LIMITED TO: STRUCTURAL MEMBERS, MECHANICAL DUCTS AND INSULATION, CONDUITS, RACEWAYS, SPRINKLER SYSTEM, LIGHT FIXTURES, CEILING SYSTEM, AND ANY SPECIAL STRUCTURAL SUPPORTS REQUIRED) AND SHALL BE RESPONSIBLE FOR MAINTAINING THE FINISH CEILING HEIGHT ABOVE THE FINISHED FLOOR INDICATED IN THE DRAWINGS AND THE FINISH SCHEDULE. (CEILING HEIGHT DIMENSIONS ARE TO THE FINISH SURFACE OF THE CEILING).
15. IN AREAS OF NEW WORK, ACCESS PANELS SHALL BE PROVIDED AND INSTALLED WHEREVER REQUIRED BY CODE OR FOR THE PROPER OPERATION OR MAINTENANCE OF MECHANICAL OR ELECTRICAL EQUIPMENT (I.E. TERMINAL BOXES, VALVES, DAMPERS, ETC.), WHETHER OR NOT INDICATED ON THE DRAWINGS. CONTRACTOR SHALL COORDINATE SIZE, LOCATION, AND TYPE OF ACCESS PANEL WITH OTHER CONTRACTORS WORK AND RECEIVE APPROVAL OF THE ARCHITECT. ACCESS PANEL SHALL NOT BE LOCATED, FRAMED OR INSTALLED WITHOUT EXPRESSED APPROVAL OF THE ARCHITECT.
16. ALL DUCT PENETRATION THROUGH PARTITIONS AND CEILINGS SHALL BE PROVIDED WITH NECESSARY FRAMED OPENINGS, BRACING, AND FIRE DAMPERS AS REQUIRED BY CODE.
17. THE ARCHITECT SHALL BE CONSULTED IN ALL CASES WHERE CUTTING INTO AN EXISTING STRUCTURAL PORTION OF ANY BUILDING PRIOR TO PROCEEDING WITH WORK.

FIRE ALARM REPLACEMENT & RELATED WORK

AT FOR

JOB # 26103

ABBREVIATIONS, LEGENDS, SYMBOLS



KOHLER  
ARCHITECTURE

1110 WEST FRONT STREET  
MONROE, MICHIGAN 48161  
WWW.KOHLERARCHITECT.NET

MAKE  
Things Better+

RAISINVILLE ELEMENTARY SCHOOL

2300 NORTH RAISINVILLE ROAD, MONROE MI 48162

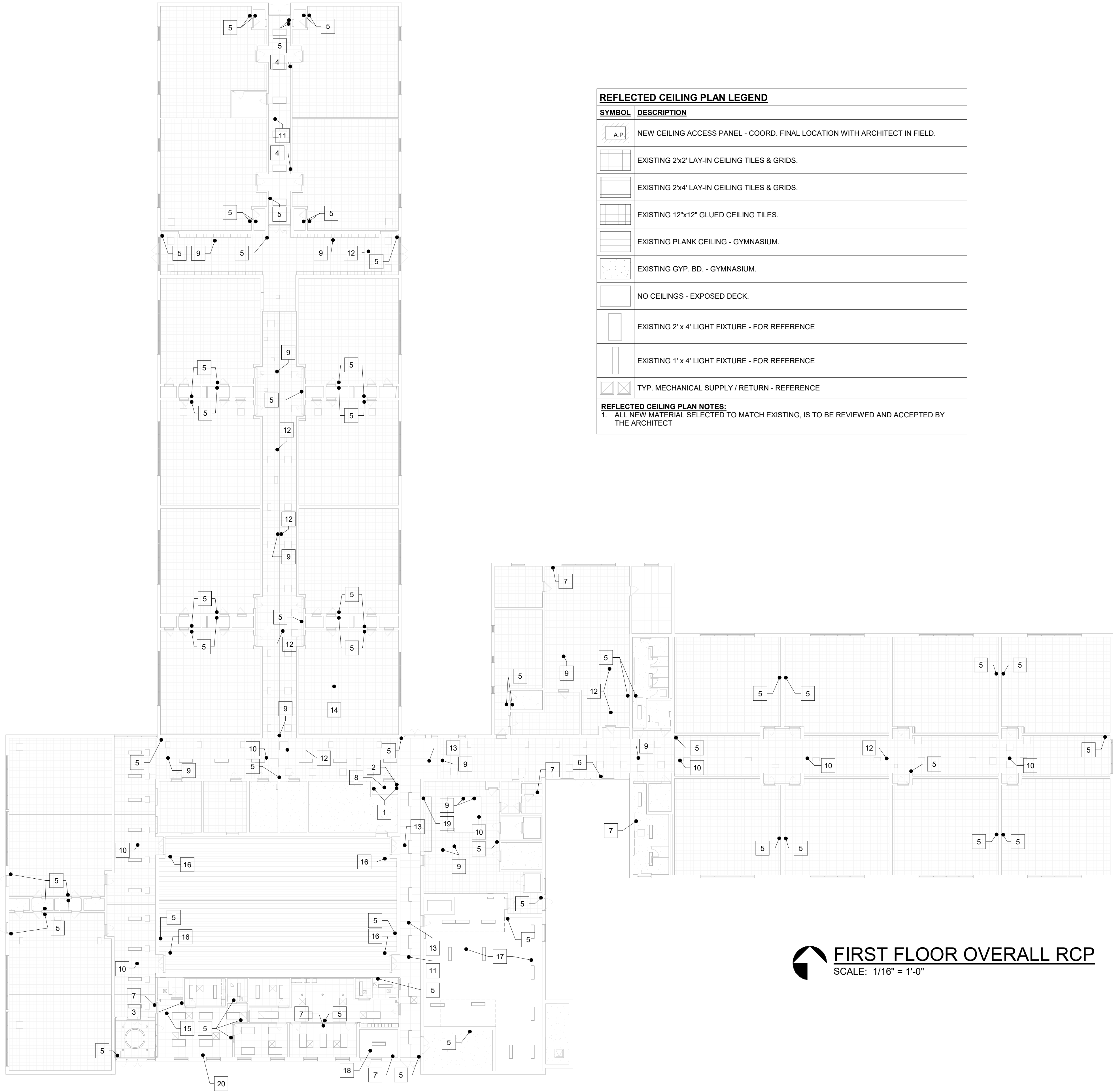
MONROE PUBLIC SCHOOLS

1275 N. MACOMB STREET, MONROE MI 48162

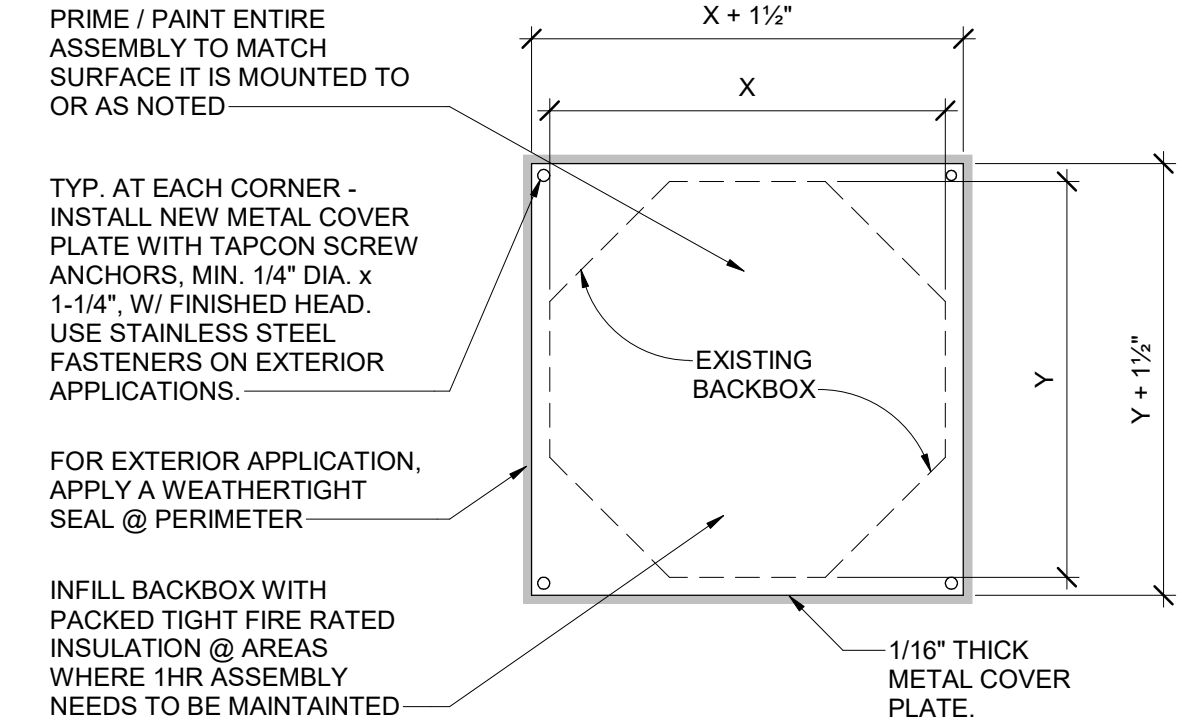
T1.00







**FIRST FLOOR OVERALL RCP**  
SCALE: 1/16" = 1'-0"



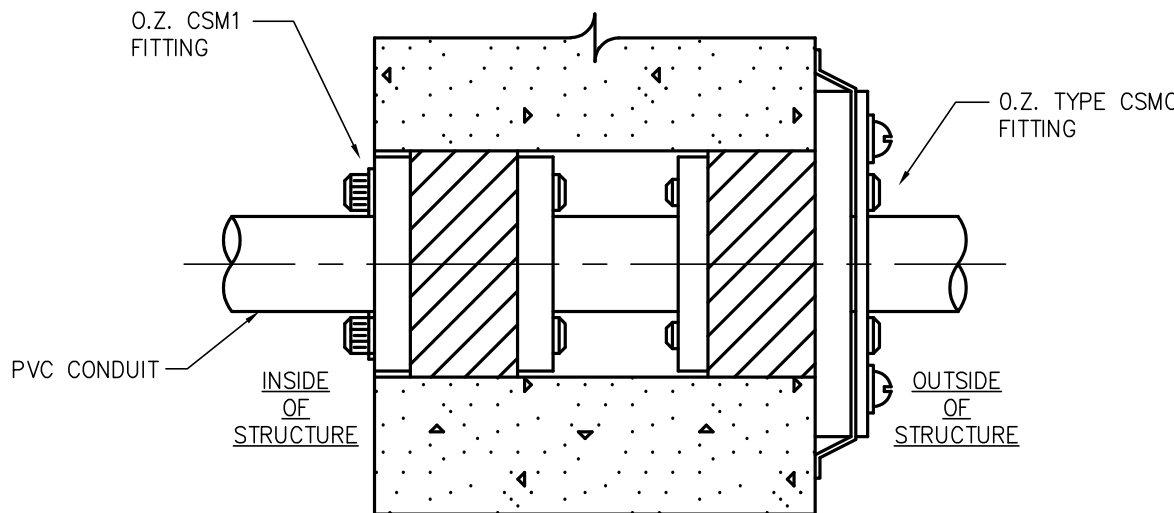
NOTE: AVERAGE METAL COVER PLATE SIZE IS 12"x12". FIELD VERIFY AFTER REMOVAL OF ELECTRICAL EQUIPMENT TO DETERMINE ACTUAL SIZE OF BACKBOX. SIZE NEW COVER PLATE AS INDICATED ABOVE.

**TYP. COVER PLATE**  
SCALE: 1 1/2" = 1'-0"

FIRE ALARM COORDINATION KEYNOTES	
#	KEYNOTE
1	EXISTING FIRE ALARM CONTROL PANEL TO BE REMOVED AND NEW PANEL TO BE RELOCATED TO OPPOSITE WALL. REFER TO ELECTRICAL DRAWINGS FOR COORDINATION.
2	EXISTING FIRE ALARM NOTIFICATION CIRCUIT PANEL TO BE REMOVED.
3	NEW FIRE ALARM ANNUNCIATOR PANEL TO BE INSTALLED. ANY NEW EXPOSED DEVICE BOX AND RACEWAY TO BE PAINTED COLOR TO MATCH XTG. WALL.
4	WALL MOUNTED FIRE ALARM DEVICE TO BE REMOVED. XTG. GYP. BD. WALL TO BE PATCHED PAINTED FOR A SMOOTH CONSISTANT FINISH, COLOR TO MATCH XTG.
5	WALL MOUNTED FIRE ALARM DEVICE TO BE REMOVED & REPLACED WITH NEW. PATCH & PAINT WALL TO A SMOOTH FINISH, COLOR TO MATCH EXISTING WALL.
6	XTG STOREFRONT MOUNTED FIRE ALARM DEVICE BEING REMOVED & REPLACED.
7	NEW WALL MOUNTED FIRE ALARM DEVICE BEING INSTALLED IN NEW LOCATION. ANY NEW EXPOSED DEVICE BOX AND/OR RACEWAY TO BE PAINTED COLOR TO MATCH XTG. WALL.
8	CEILING MOUNTED FIRE ALARM DEVICE TO BE REMOVED & REPLACED WITH NEW IN SAME LOCATION ON GYP. BD. CEILING.
9	CEILING MOUNTED FIRE ALARM DEVICE TO BE REMOVED & REPLACED ON EXISTING GLUED TILE CEILING.
10	NEW CEILING MOUNTED FIRE ALARM DEVICE TO BE INSTALLED IN EXISTING GLUED CEILING CEILING.
11	NEW CEILING MOUNTED FIRE ALARM DEVICE TO BE INSTALLED IN EXISTING LAY-IN CEILING TILE.
12	EXISTING CEILING MOUNTED FIRE ALARM DEVICE TO BE REMOVED AND DISCONNECTED. REPLACE GLUED CEILING TILE AS REQUIRED TO MATCH EXISTING.
13	EXISTING CEILING MOUNTED FIRE ALARM DEVICE TO BE REMOVED AND DISCONNECTED. REPLACE LAY-IN CEILING TILE AS REQUIRED TO MATCH EXISTING.
14	NEW CEILING MOUNTED FIRE ALARM DEVICE TO BE INSTALLED ON XTG. LAY-IN CEILING.
15	CEILING FIRE ALARM DEVICE TO BE REMOVED & REPLACED IN EXACT SAME LOCATION ON LAY-IN CEILING. REPLACE CEILING TILE AS REQUIRED.
16	NEW DEVICE BEING INSTALLED IN NEW LOCATION ON EXISTING SLAT CEILING. ANY NEW EXPOSED DEVICE BOX AND RACEWAY TO BE PAINTED TO MATCH XTG. SURFACE.
17	FIRE ALARM DEVICES MOUNTED TO EXPOSED ROOF STRUCTURE IN BOILER ROOM TO BE REMOVED & REPLACED. NEW CONDUIT AND JUNCTION BOXES TO REMAIN UNFINISHED. REFER TO ELEC. DWGS. FOR MORE INFO.
18	NEW FIRE ALARM DEVICES MOUNTED TO EXPOSED ROOF STRUCTURE. IN ELEC. RM. NEW CONDUIT AND JUNCTION BOXES TO REMAIN UNFINISHED. REFER TO ELEC. DWGS. FOR MORE INFO.
19	EXISTING FIRE RATED OVERHEAD DOOR TO BE TIED INTO NEW FIRE ALARM SYSTEM.
20	RED PHONE - EXISTING TO REMAIN

L:\Kohler Architecture Inc\26003129.001A-Kohler MPS Raisinville Fr\Working\4\_DRAWINGS\26003129E1.01.dwg 02/05/26 10:58:23 NBruno

ELECTRICAL LEGEND	
ABBREVIATIONS	CCT E.C. EXTG. F.B.O.  G.C. HP L.D. MAX M.C. MH MIN N/L OREQ REV R/M R/L UNO W/ WG WP
	CIRCUIT ELECTRICAL (SUB) CONTRACTOR EXISTING FURNISHED BY OTHERS, INSTALLED AND/OR WIRED BY ELECTRICAL CONTRACTOR GENERAL (SUB) CONTRACTOR HORSEPOWER LOCATE AS DIRECTED MECHANICAL (HVAC, PLBG, FP, OR TC) (SUB) CONTRACTOR MOUNTING HEIGHT TO BOTTOM OF DEVICE, BOX, OR FIXTURE, UNO MINIMUM NIGHT LIGHT, UNSWITCED CIRCUIT OR EQUAL REVIEW REMOVE RELOCATE/RELOCATED UNLESS NOTED OTHERWISE COMPLETE WITH WITH WIRE GUARD WEATHERPROOF DEVICE, ENCLOSURE OR COVER PLATE.
XX,XXX	INDICATES MAXIMUM RMS SHORT CIRCUIT FAULT AT NOTED BUS PER ENGINEER'S CALCULATIONS VIA ASSUMPTIONS ON UTILITY FAULT INFORMATION.
2	INDICATES NOTE-SEE TABULATION ON SAME SHEET
W	WIRE TICKS INDICATE BRANCH CIRCUIT PHASE, NEUTRAL, & GROUND WIRES, RESPECTIVELY CONDUIT-CONCEALED IN CELING, WALL OR FLOOR OF NEW CONSTRUCTION. CONCEALED WHEREVER POSSIBLE IN EXISTING CONSTRUCTION (1/2" DIA. MIN.)
→	HOMERUN TO PANEL OR LOCATION NOTED
---	INDICATES CONCEALED CONDUIT UNDERGROUND/UNDERFLOOR - 3/4" MIN.
---	SURFACE MOUNTED RACEWAY-W/MATCHING FITTINGS, BOXES, ACCESSORIES, MOUNTING BRACKETS/SUPPORTS (NO STRAPS), ETC. WIREMOLD #V700 SERIES, HUBBELL #HBL75010W SERIES OREQ
---	INDICATES LOW VOLT CABLING ROUTED THRU PLENUM OR CEILING SPACE.
■	RED FIRE ALARM MANUAL PULL STATION-RED SURFACE BOX/SKIRT-CLEAR ENCLOSURE. SHIELD OR (WG=WIREGUARD)-UNO-MH 44"
■	RED FIRE ALARM SIGNAL-STROBE LIGHT ONLY-RED SURFACE BOX/SKIRT-MH 80"
■	RED FIRE ALARM SIGNAL-SPEAKER W/STROBE LIGHT-RED SURFACE BOX/SKIRT-MH 80"
■	FIRE ALARM SMOKE DETECTOR-CEILING MOUNTED
■	FIRE ALARM HEAT DETECTOR-CEILING MOUNTED
■	FIRE ALARM CARBON MONOXIDE DETECTOR-CEILING MOUNTED
■	FIRE ALARM DUCT TYPE SMOKE DETECTOR (SA=SUPPLY; RA=RETURN; OA=OUTSIDE AIR)
■	FIRE ALARM MAGNETIC DOOR HOLDER-MH 6"6"
■	FIRE ALARM SYSTEM REMOTE ANNUNCIATOR WITH MICROPHONE-SEMI FLUSH-MH 5'0" TO TOP - SIMPLEX YM9067
■	FIRE ALARM SYSTEM CONTROL PANEL-SEMI FLUSH-MH 6'0" TO TOP
■	FIRE ALARM INDIVIDUALLY ADDRESSABLE ZONE MODULE-FLUSH MOUNTED- MH 5'0"
■	FIRE ALARM INDIVIDUALLY ADDRESSABLE RELAY/SIGNAL MODULE-FLUSH MOUNTED-MH 5'0"
■	EXISTING ITEMS ARE TO REMAIN-UNO
■	ALL EXISTING ITEMS "DASHED" ARE TO BE REMOVED-UNO
■	REMOVE EXISTING ITEM INCLUDING ASSOCIATED CONDUIT AND WIRING NO LONGER IN SERVICE BACK TO SOURCE.
■	EXISTING FIRE ALARM SYSTEM CONTROL PANEL TO BE REMOVED-UNO
■	EXISTING FA NOTIFICATION CIRCUIT PANEL-TO BE REMOVED
■	EXISTING FIRE ALARM SYSTEM REMOTE ANNUNCIATOR TO BE REMOVED-UNO
■	EXISTING FIRE ALARM SIGNAL-STROBE LIGHT ONLY TO BE REMOVED-UNO
■	EXISTING FIRE ALARM SIGNAL-HORN W/STROBE LIGHT TO BE REMOVED-UNO
■	EXISTING FIRE ALARM PULL STATION TO BE REMOVED-UNO
■	EXISTING SMOKE DETECTOR TO BE REMOVED-UNO
■	EXISTING HEAT DETECTOR TO BE REMOVED-UNO
■	EXISTING CARBON MONOXIDE DETECTOR TO BE REMOVED-UNO
■	EXISTING FIRE ALARM DUCT TYPE SMOKE DETECTOR TO BE REMOVED-UNO
■	EXISTING INDIVIDUALLY ADDRESSABLE ZONE MODULE TO BE REMOVED-UNO
■	EXISTING INDIVIDUALLY ADDRESSABLE RELAY/SIGNAL MODULE TO BE REMOVED-UNO



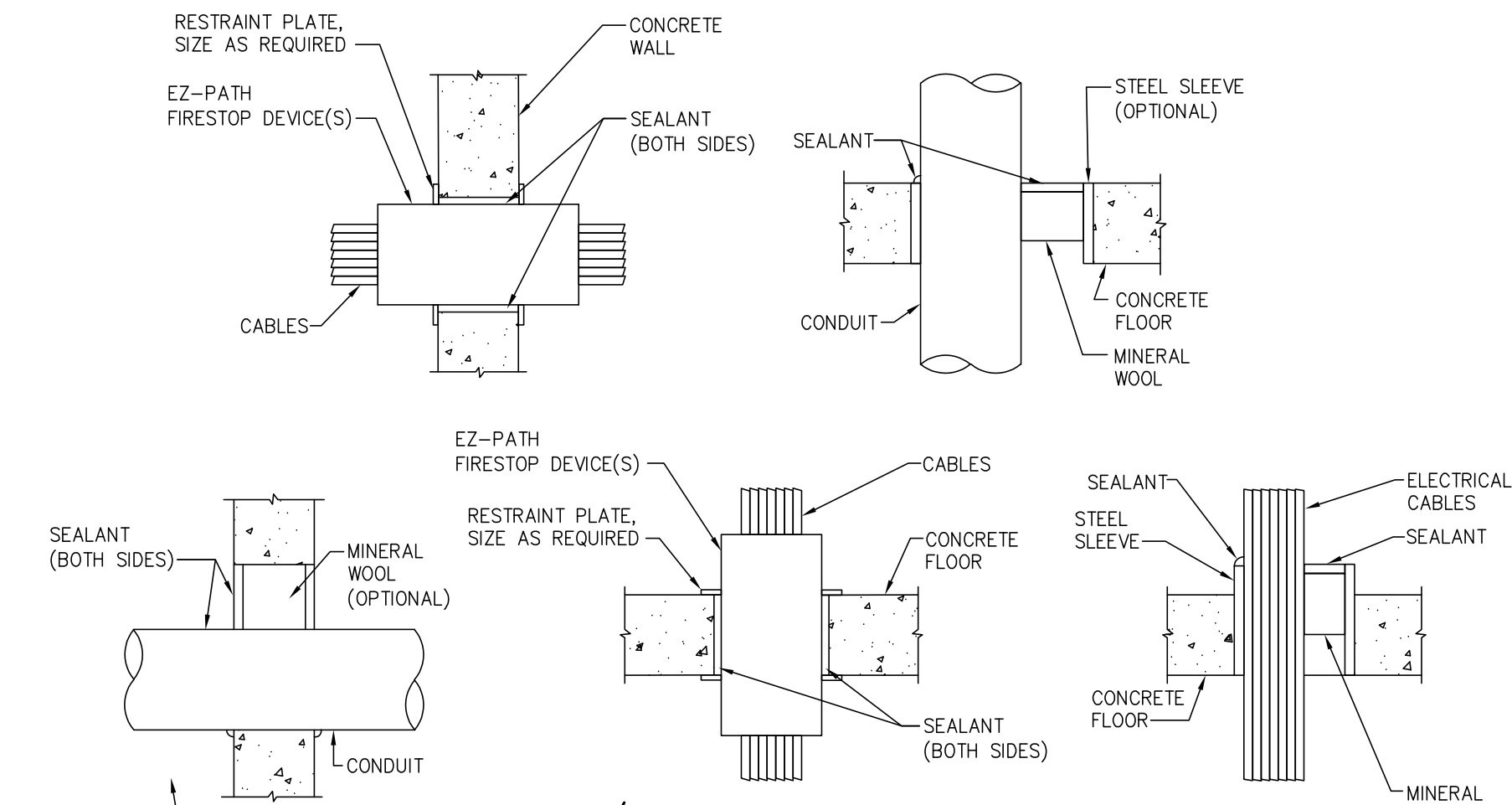
CONDUIT THRU WALL SEAL DETAIL  
NO SCALE

### PROJECT COORDINATION SCOPE:

- FULL COORDINATION BETWEEN ALL TRADES IS REQUIRED TO ENSURE UNINTERRUPTED SYSTEM OPERATION AND CODE COMPLIANCE. THE ELECTRICAL CONTRACTOR SHALL COORDINATE ALL FIRE ALARM, SECURITY, AND LOW-VOLTAGE SYSTEM INTERFACES AND SHALL CONTACT AND HIRE THE FOLLOWING VENDORS FOR ALL SYSTEM TIE-INS, TESTING, PROGRAMMING, AND COORDINATION.
- GENERAL TRADES SHALL BE RESPONSIBLE FOR ALL PATCHING, REPAIR, AND RESTORATION OF WALLS, CEILINGS, FLOORS, AND FINISHES IMPACTED BY THE FIRE ALARM REPLACEMENT PROJECT. THIS INCLUDES CUTTING, PATCHING, PAINTING, AND SURFACE RESTORATION NECESSARY TO RETURN AFFECTED AREAS TO EXISTING CONDITIONS. GENERAL TRADES SHALL ALSO PROVIDE CEILING ACCESS POINTS AND ANY OTHER MISCELLANEOUS CONSTRUCTION ITEMS REQUIRED TO SUPPORT THE WORK.
- START UP TESTS, INITIAL SYSTEM PROGRAMMING AND DATA BASE ENTRIES SHALL BE PROVIDED BY RED LETTER & HABITEC SECURITY THROUGH THE ELECTRICAL CONTRACTOR. ALL FUNCTIONS SHALL BE DEMONSTRATED TO THE SATISFACTION OF THE OWNER'S DESIGNATED SYSTEM ADMINISTRATOR. AT PROJECT COMPLETION, RED LETTER & HABITEC SECURITY SHALL PROVIDE A LETTER INDICATING THAT ALL PARTS AND FUNCTIONS ARE OPERATING PROPERLY, TURN OVER TO OWNER ALL SOFTWARE LICENSING, PROVIDE RECOMMENDED MAINTENANCE AND INSPECTION SCHEDULES FOR EACH YEAR OF OPERATION, AND PROVIDE WRITTEN WARRANTY FOR EQUIPMENT AND SYSTEM FUNCTIONALITY FOR A PERIOD OF TWO YEARS. DOOR ACCESS SYSTEM TRAINING FOR THE OWNER SHALL BE PROVIDED.
- CONTACT INFORMATION: **CONTACT AND HIRE RED LETTER (888) 564-5488. CONTACT AND HIRE HABITEC SECURITY, NICK WERT (419) 205-1147.**

### FIRE ALARM SYSTEM GENERAL NOTES:

- PROVIDE A COMPLETE NEW BUILDING FIRE ALARM SYSTEM THAT HAS BEEN FULLY TESTED, CERTIFIED, AND INSPECTED BY THE LOCAL AUTHORITY HAVING JURISDICTION PRIOR TO THE REQUIRED OCCUPANCY DATE.
- NEW DEVICES, FIRE ALARM PULL STATIONS WITH VANDAL GUARD, SMOKE DETECTORS, DUCT DETECTORS, HORN(SPEAKER)/STROBE AND STROBE DEVICES SHALL BE COMPATIBLE WITH EXISTING FIRE ALARM SYSTEM AND OF SIMILAR TYPE MODEL AS EXISTING DEVICES. CANDELA AND dB RATING PER NFPA 72. PROVIDE RELEASE TO DOORS WITH ACCESS CONTROL UPON FIRE ALARM SIGNAL. PROVIDE 'NAC' PANEL TO EXISTING FIRE ALARM PANEL. PROVIDE NAC CARD IN EXISTING FACP. PROVIDE 120V POWER TO NAC POWER SUPPLY. PROVIDE ALL POWER-LIMITED TWISTED SHIELDED FPLP CABLING, # 14 THHN/THWN LOW VOLTAGE CONDUCTORS AND #12 THHN/THWN LINE VOLTAGE CONDUCTORS AND CONDUIT. PROVIDE ALL CONDUIT, J-BOXES, CABLING, CARDS, MODULES, RELAYS, PROGRAMMING AND START-UP. PROVIDE SURFACE MOUNT RACEWAYS AND BOXES AS INDICATED FOR EXISTING WALLS.
- PROVIDE RACEWAY FOR EACH LOW VOLTAGE DEVICE (FIRE ALARM, ACCESS CONTROL, DOOR HARDWARE) AS FOLLOWS: VERTICAL CABLE RUNS IN 3/4" CONDUIT (WITH PULL STRING AND INSULATED BUSHING STUBBED ABOVE AN ACCESSIBLE CEILING OR JOIST SPACE AND HORIZONTAL CABLE RUNS IN J-HOOKS, EVERY 3' TO 4'. PROVIDE EACH LOW VOLTAGE DEVICE WITH A ONE-GANG DEEP J-BOX FLUSH IN WALL OR CEILING. SEE OTHER NOTES AND DRAWINGS FOR FIRE ALARM/ACCESS CONTROL/DOOR HARDWARE DEVICE, CABLE, PANEL, EQUIPMENT, ETC. REQUIREMENTS. PROVIDE 120V ELECTRICAL CONNECTION OR DUPLEX RECEPTACLE TO FIRE ALARM/ACCESS CONTROL/DOOR HARDWARE DEVICES, PANELS, AND POWER SUPPLIES.
- OWNER PREFERRED CONTACT INFORMATION: **CONTACT AND HIRE FIRE ALARM SYSTEM REPRESENTATIVE JOHNSON CONTROLS, EMILEE J. ROACH (419) 279-3236.**



CONCRETE/MASONRY FLOOR & WALLS  
CONDUIT/CABLE PENETRATIONS THROUGH RATED ASSEMBLIES  
N.T.S.

### GENERAL NOTES:

- CABLE AND CONDUIT PENETRATION DETAILS ARE BASED ON A U.L. LISTED FIRE RATED ASSEMBLY (MINIMUM) UTILIZING STI FIRE STOP PRODUCTS. MANUFACTURERS SHALL BE STI, HILTI, 3M OR APPROVED EQUAL. REFER TO MANUFACTURER'S SPECIFICATIONS AND INSTALLATION DETAILS FOR EXACT INSTALLATION METHODS.
- PACKING AND SEALANT DEPTHS SHALL BE PER MANUFACTURER'S SPECIFICATIONS FOR U.L. ASSEMBLY RATING COMPLIANCE.
- ALL FIRE STOP LOCATIONS SHALL BE LABELED AT POINT OF PENETRATION. LABEL SHALL IDENTIFY FIRE STOPPING MATERIAL, U.L. LISTING NUMBER AND HOUR RATING OF WALL/FLOOR

BRANCH CIRCUIT CONDUCTOR SIZING CHART		
MAX. CIRCUIT LENGTH TO FARTHEST OUTLET	CIRCUIT VOLTAGE	MINIMUM BRANCH CIRCUIT SIZE.
100 FEET	120	#12 AWG
165 FEET	120	#10 AWG
265 FEET	120	#8 AWG
400 FEET	120	#6 AWG
250 FEET	277	#12 AWG
400 FEET	277	#10 AWG
550 FEET	277	#8 AWG
750 FEET	277	#6 AWG

### M.P.S. CABLING STANDARDS

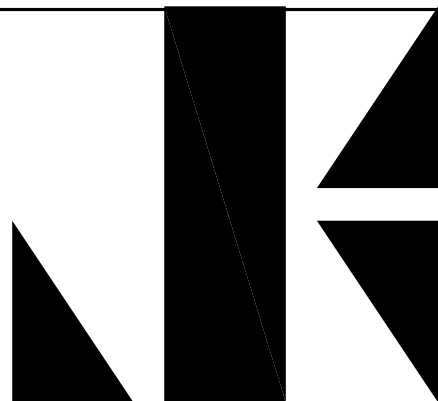
BRAND	PART NUMBER	DESCRIPTION	PURPOSE
ICC	IC1078F6BL	BLUE CAT6 KEYSTONE	KEYSTONE FOR DATA PORT DEVICES
ICC	IC1078F6RD	YELLOW CAT6 KEYSTONE	KEYSTONE FOR MISC. DATA PORT
ICC	IC1078F6YL	RED CAT6 KEYSTONE	KEYSTONE FOR AI PHONE SERVICES
ICC	IC1078F6ABL	BLUE CAT6A KEYSTONE	KEYSTONE FOR DATA PORT DEVICES
ICC		CLASSIC CONFIGURABLE FACEPLATES WITH STATION ID (IVORY)	WALL PLATES FOR DATA PORTS
ICC	ICMP44C61	48 PORT HIGH-DENSITY PATCH PANEL, FEED THROUGH COUPLERS	PATCH BAY FOR DATA PORTS IN DATA CABINET
		LIGHT BLUE CABLING FIBEROPTIC MULTIMODE	FIBER OPTIC NETWORK SERVICES
		DARK GRAY CABLING	16-GAUGE CABLING FOR HABITEC SECURITY
		RED CABLING	CABLING FOR FIRE ALARM
		WHITE CABLING	CABLING FOR ACCESS CONTROL
		BEIGE CABLING	CABLING FOR HVAC / BOILER SERVICES
		CAT 6 550 MHZ PLENUM YELLOW	DATA CABLE FOR ALL CAT6 PORTS
		CAT5E 350 MHZ PLENUM BLUE	DATA CABLE FOR ALL PORTS TELCO DEVICES
		CAT 6A 23 AWG. 4 PAIR SOLID RISER WHITE	
		CAT6A PATCH CABLE - 1FT (RED, BLUE, YELLOW)	PATCH CABLE FOR PORTS WITH DATA CABINET

- ALL CABLING INSTALLED MUST BE OF CMP (PLENUM) GRADE. THIS IS TO KEEP WITH STANDARDS IN PLACE WITH DISTRICT-WIDE CABLING.
- ALL DATA CABLING INSTALLED MUST BE CERTIFIED, TESTED AND CERTIFICATION PROVIDED TO OWNER AT THE END OF THE PROJECT.
- ALL DATA CABLING MUST BE LABELED IN ACCORDANCE TO THE DISTRICT STANDARD (RACK LETTER + PORT NUMBER).
- CONTRACTOR SHALL COORDINATE WITH ALL M.P.S. DISTRICT I.T. STANDARDS FOR BRAND, TYPE, PART NUMBER, ETC.

Digitally signed by Nicole L.  
Winhoven-Kamm  
DN: C=US,  
E=nkamm@kleinfelder.com,  
O=Kleinfelder, OU=Kleinfelder,  
CN=Nicole L. Winhoven-Kamm  
Date: 2026.02.05 11:34:58-05'00'

ELECTRICAL DRAWING LIST		
DWG NO.	TITLE	FILE NO.
E1.01	ELECTRICAL LEGEND AND DETAILS	26003129E1.01.dwg
E2.01	FIRE ALARM SYSTEM DEMOLITION PLAN	26003129E2.01.dwg
E4.01	FIRE ALARM SYSTEM PLAN	26003129E4.01.dwg

THIS ITEM HAS BEEN ELECTRONICALLY SIGNED AND  
SEALED USING A DIGITAL SIGNATURE AND DATE.  
PRINTED COPIES OF THIS DOCUMENT ARE NOT  
CONSIDERED SIGNED AND SEALED, AND THE SIGNATURE  
MUST BE VERIFIED ON ANY ELECTRONIC COPIES.



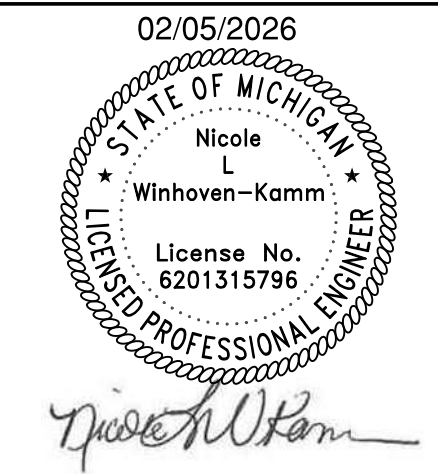
**KOHLER**  
ARCHITECTURE

1110 WEST FRONT STREET  
MONROE, MICHIGAN 48161  
WWW.KOHLERARCHITECT.NET

**MAKE**  
Things Better™



Mechanical, Electrical, Plumbing, Fire Protection  
5201 Lewis Commons Blvd, Suite 5201  
Perrysburg, OH 43551 | 419.352.7537



DATE	DESCRIPTION
02.09.2026	BIDDING & STATE REVIEW

### FIRE ALARM REPLACEMENT & RELATED WORK

**RAISINVILLE ELEMENTARY SCHOOL**  
2300 NORTH RAINVILLE ROAD, MONROE, MI 48162  
**MONROE PUBLIC SCHOOLS**  
1275 N. MACOMB STREET, MONROE, MI 48162

AT

FOR

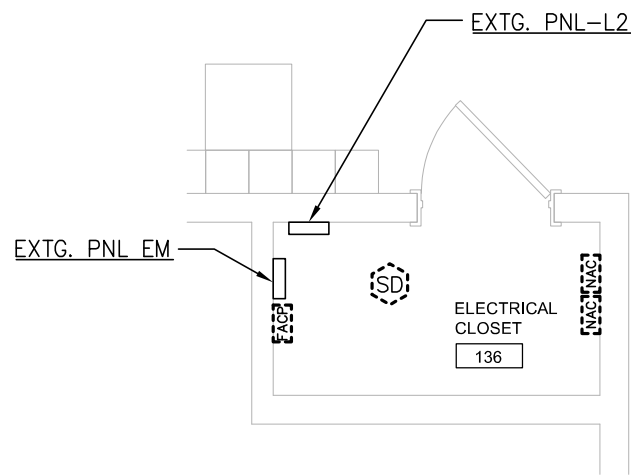
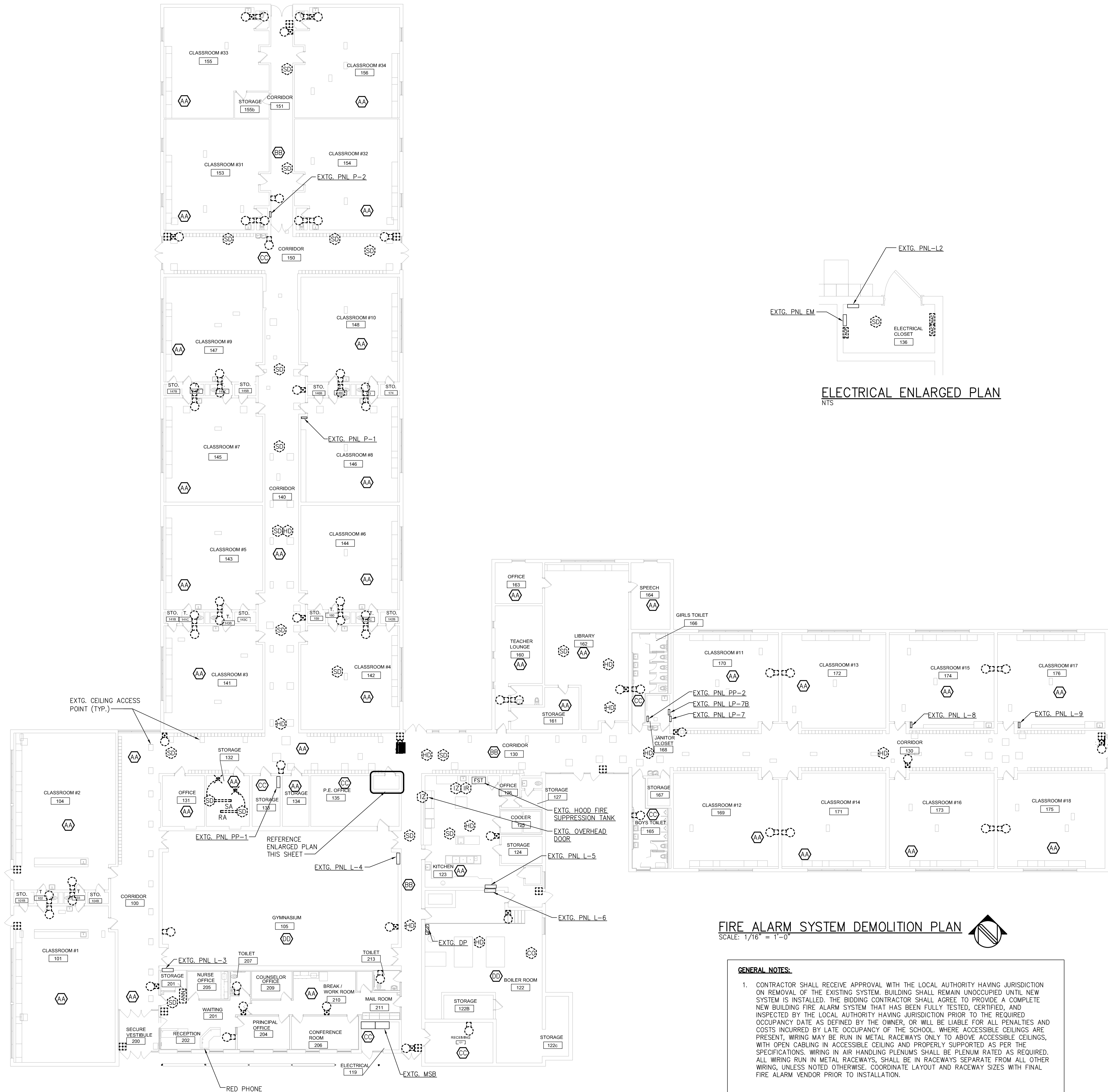
JOB # **26103**

ELECTRICAL LEGEND  
AND DETAILS

**E1.01**



L:\Kohler Architecture Inc\26003129.001A-Kohler MPS Raisinville Fr\Working\4\_DRAWINGS\26003129E2.01.dwg 02/05/26 10:58:57 NBruno



ELECTRICAL ENLARGED PLAN  
NTS

FIRE ALARM SYSTEM DEMOLITION PLAN

SCALE: 1/16" = 1'-0"

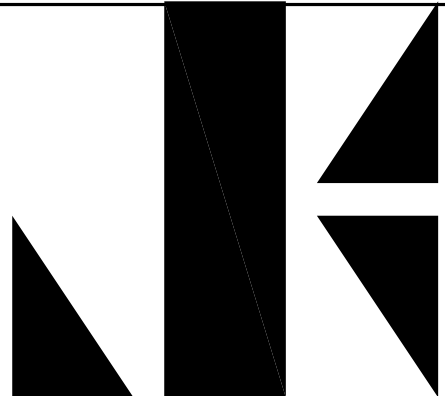
GENERAL NOTES:

1. CONTRACTOR SHALL RECEIVE APPROVAL WITH THE LOCAL AUTHORITY HAVING JURISDICTION ON REMOVAL OF THE EXISTING SYSTEM. BUILDING SHALL REMAIN UNOCCUPIED UNTIL NEW SYSTEM IS INSTALLED. THE BIDDING CONTRACTOR SHALL AGREE TO PROVIDE A COMPLETE NEW BUILDING FIRE ALARM SYSTEM THAT HAS BEEN FULLY TESTED, CERTIFIED, AND INSPECTED BY THE LOCAL AUTHORITY HAVING JURISDICTION PRIOR TO THE REQUIRED OCCUPANCY DATE AS DEFINED BY THE OWNER, OR WILL BE LIABLE FOR ALL PENALTIES AND COSTS INCURRED BY LATE OCCUPANCY OF THE SCHOOL, WHERE ACCESSIBLE CEILINGS ARE PRESENT, WIRING MAY BE RUN IN METAL RACEWAYS ONLY TO ABOVE ACCESSIBLE CEILINGS, WITH OPEN CABLING IN ACCESSIBLE CEILING AND PROPERLY SUPPORTED AS PER THE SPECIFICATIONS. WIRING IN AIR HANDLING PLENUMS SHALL BE PLENUM RATED AS REQUIRED. ALL WIRING RUN IN METAL RACEWAYS, SHALL BE IN RACEWAYS SEPARATE FROM ALL OTHER WIRING, UNLESS NOTED OTHERWISE, COORDINATE LAYOUT AND RACEWAY SIZES WITH FINAL FIRE ALARM VENDOR PRIOR TO INSTALLATION.

EXISTING CEILING TYPE

MARK	DESCRIPTION
AA	GLUED TILE CEILING
BB	DROP CEILING
CC	HARD/ DRYWALL CEILING
DD	OPEN CEILING

THIS ITEM HAS BEEN ELECTRONICALLY SIGNED AND SEALED USING A DIGITAL SIGNATURE AND DATE. PRINTED COPIES OF THIS DOCUMENT ARE NOT CONSIDERED SIGNED AND SEALED, AND THE SIGNATURE MUST BE VERIFIED ON ANY ELECTRONIC COPIES.



**KOHLER**  
ARCHITECTURE

1110 WEST FRONT STREET  
MONROE, MICHIGAN 48161  
WWW.KOHLERARCHITECT.NET

**MAKE**  
Things Better™



Mechanical, Electrical, Plumbing, Fire Protection  
5201 Lewis Commons Blvd, Suite 5201  
Perrysburg, OH 43551 | 419.352.7537



DATE: 02.09.2026  
DESCRIPTION: BIDDING & STATE REVIEW

FIRE ALARM REPLACEMENT & RELATED WORK

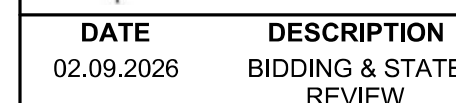
**RAISINVILLE ELEMENTARY SCHOOL**  
2300 NORTH RAISINVILLE ROAD, MONROE, MI 48162  
**MONROE PUBLIC SCHOOLS**  
1275 N. MACOMB STREET, MONROE, MI 48162

AT FOR

JOB # **26103**

FIRE  
ALARM SYSTEM  
DEMOLITION PLAN

**E2.01**



## E4.01

